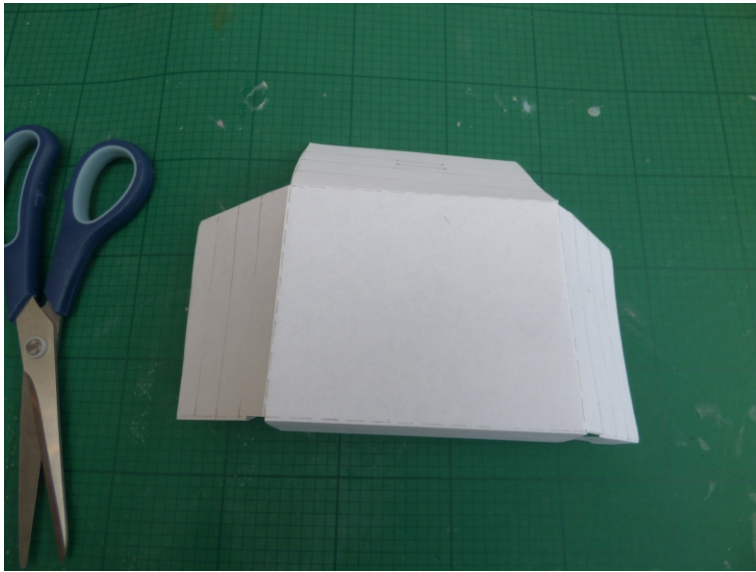
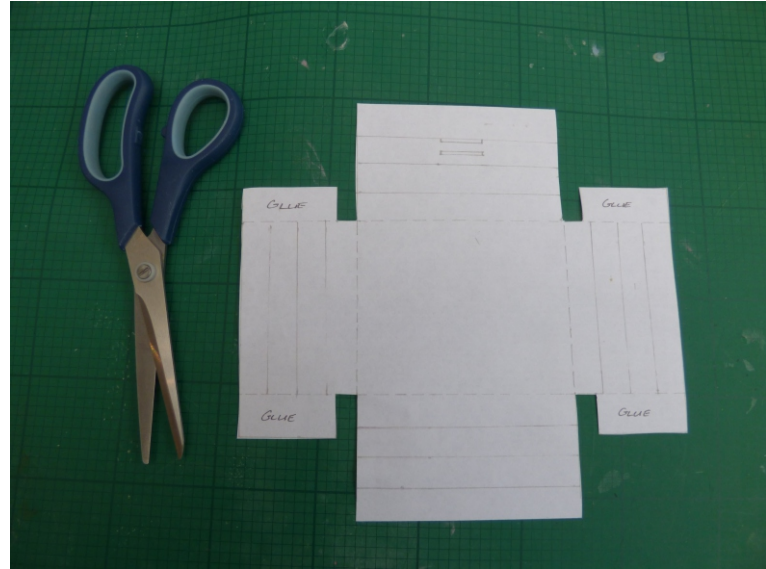
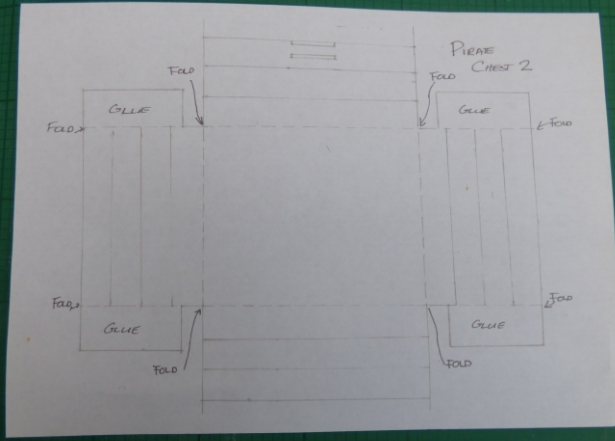
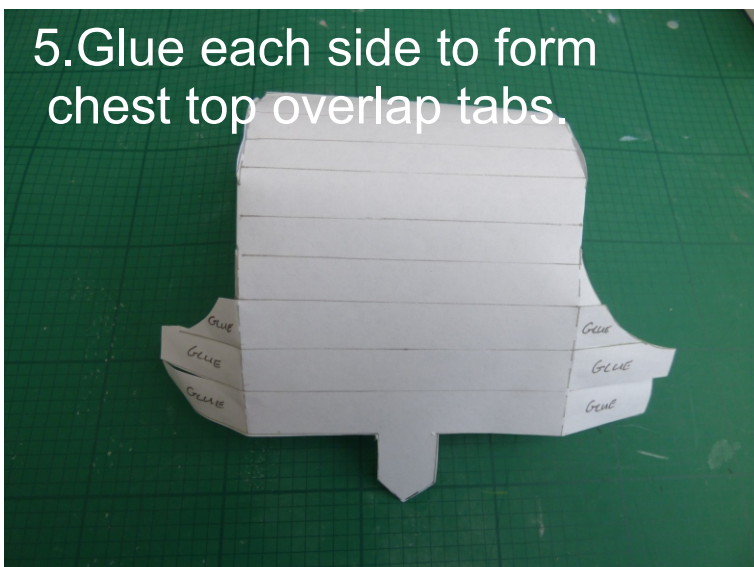
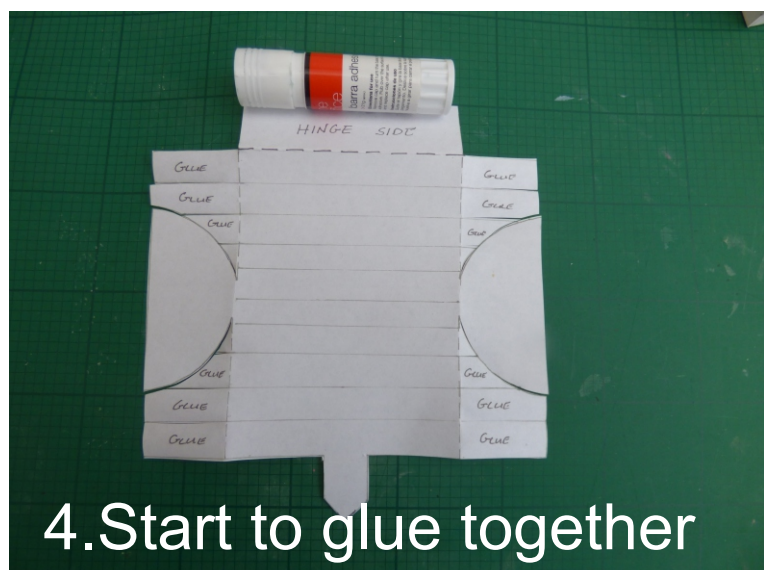
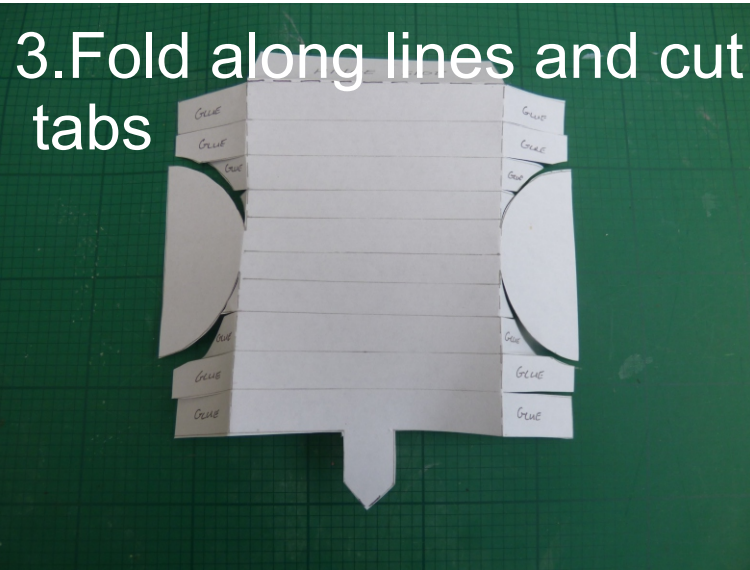
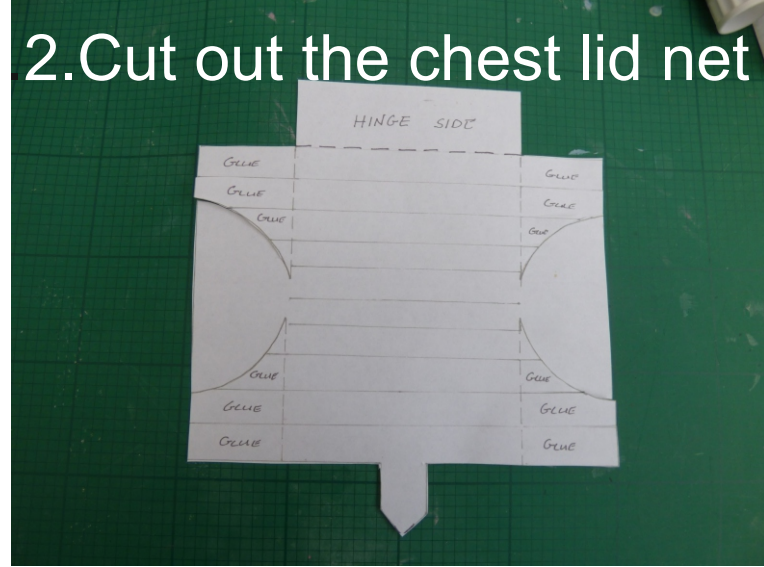
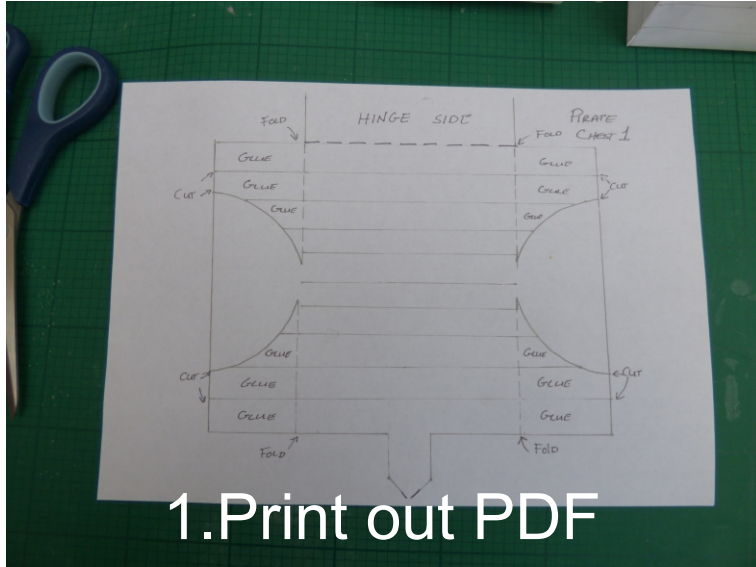


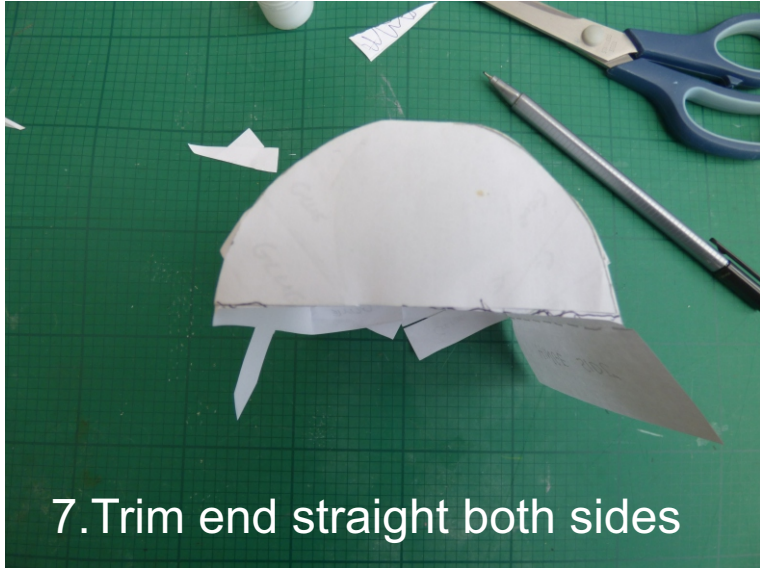
# Pirate Chest Instructions 1 of 3



# Pirate Chest Instructions 2 of 3



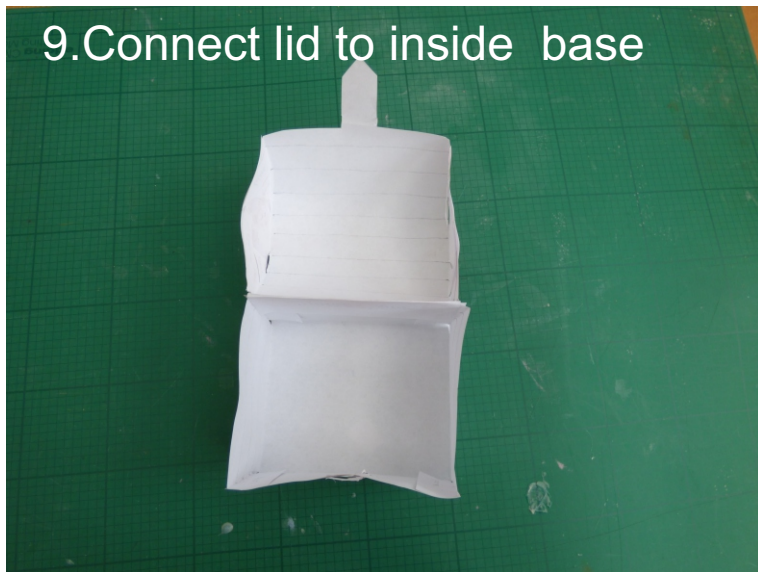
# Pirate Chest Instructions 3 of 3



7. Trim end straight both sides



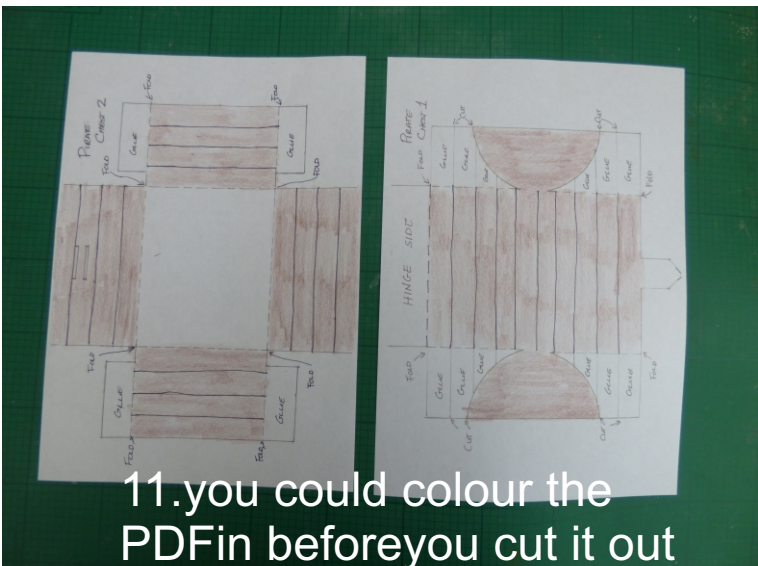
8. Glue hinge side



9. Connect lid to inside base



10. Completed chest



11. you could colour the PDF in before you cut it out

PIRATE  
CHEST 2

